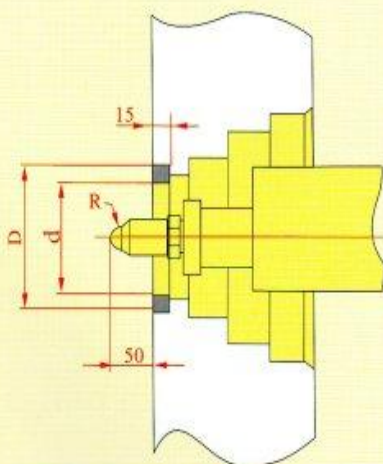
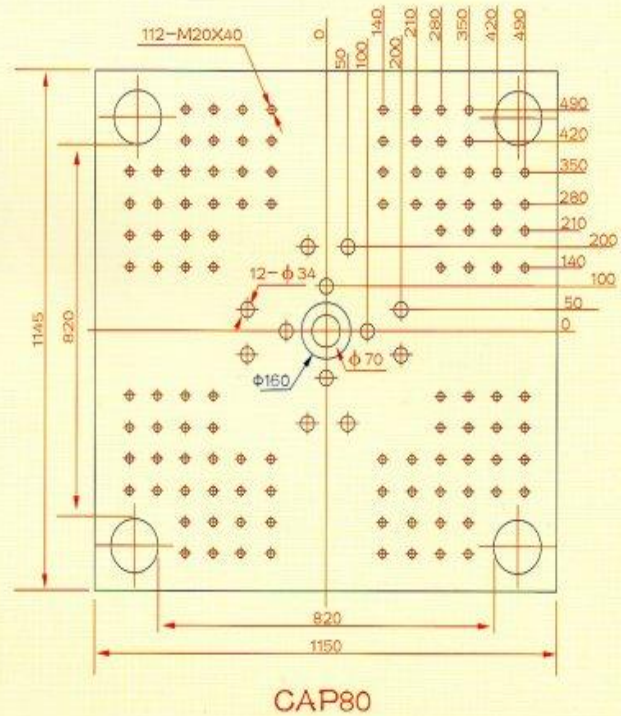
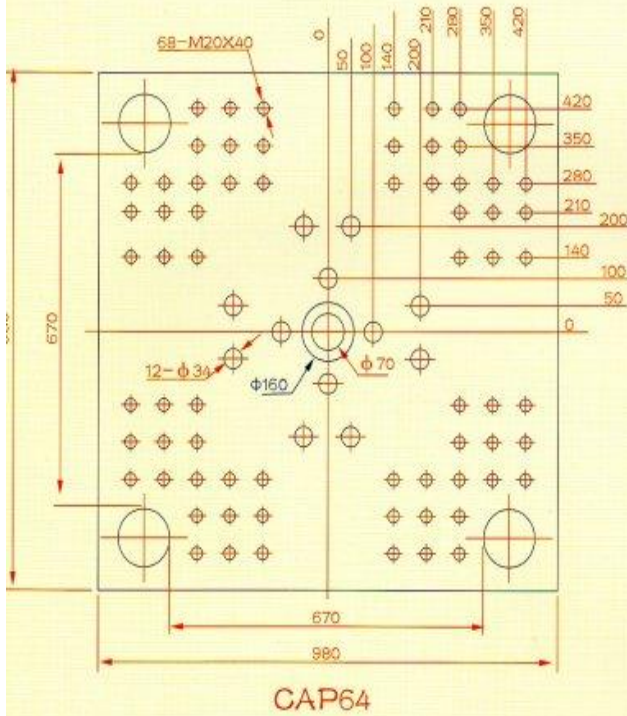


Movable Platen



CAP16,CAP24	D: φ125 d: φ100 R: φ10
CAP32,CAP48,CAP64	D: φ160 d: φ100 R: φ10
CAP80	D: φ200 d: φ150 R: φ15

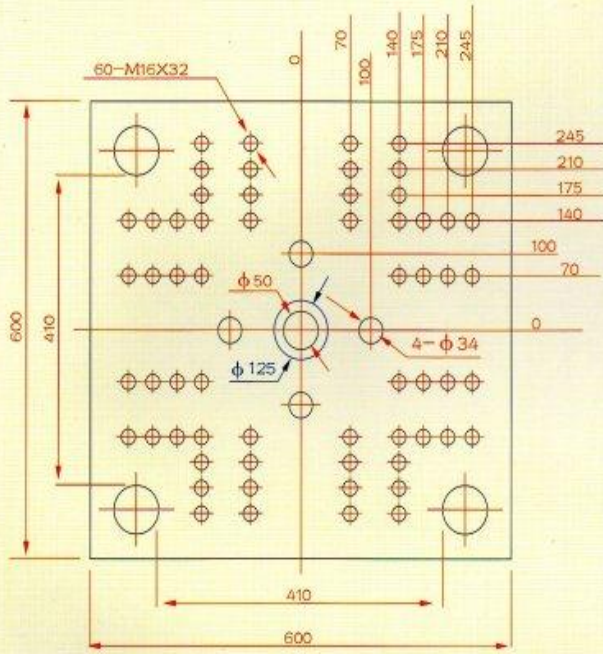


Tat Ming Technology Co.,Ltd
達明科技有限公司
達明機器(東莞)有限公司

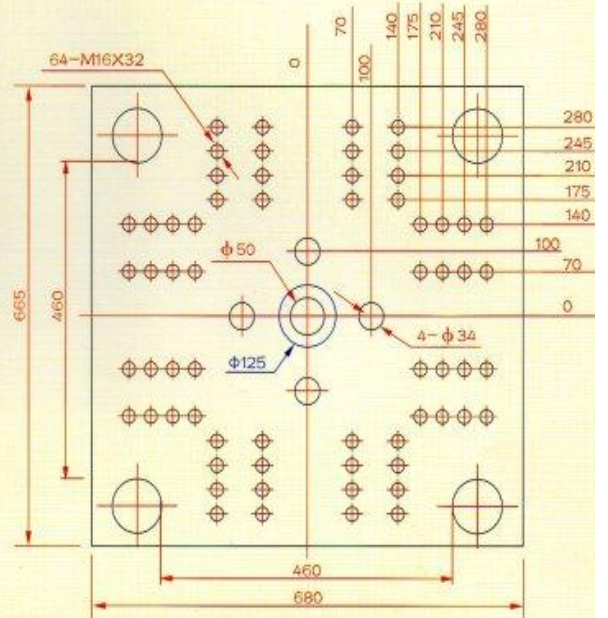
Unit 919, Tower A, Regent Centre,
 63 Wo Yi Hop Road, Kwai Chung, Hong Kong
 香港葵涌和宜合道63號麗晶中心A座919室
 電話(Tel): (852) 27904633
 傳真(Fax): (852) 27978774
 電郵: tatming@netvigator.com

中國廣東省東莞市長安鎮廈崗
 第一工業區S358省道旁康明街4號
 電話: (0769) 85315191
 傳真: (0769) 85315190
 電郵: tatming@dongguan.gd.cn
 網址: <http://www.tatming.com.cn>

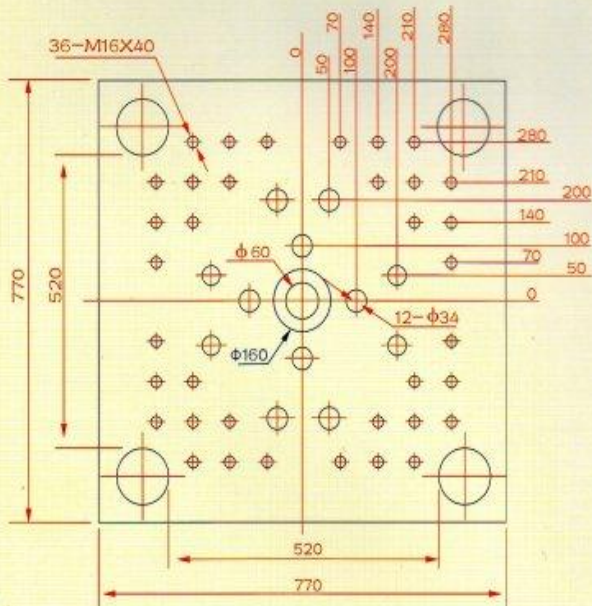
Movable Platen



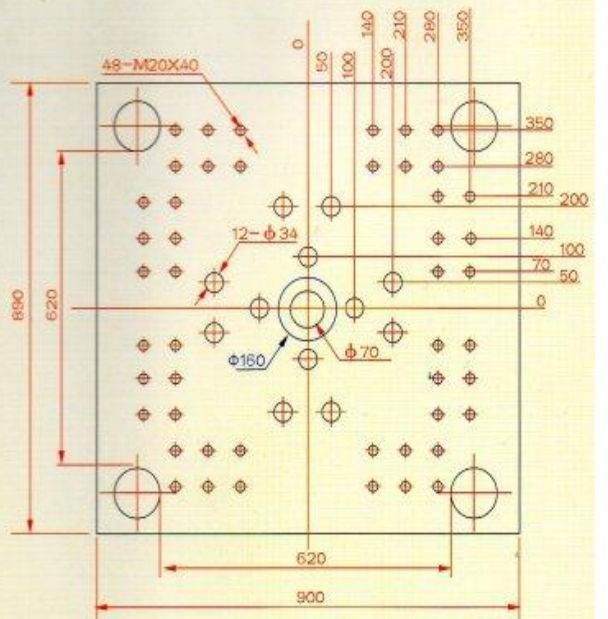
CAP16



CAP24



CAP32



CAP48

動板定中環
 Movable platen centering ring

Model	CAP16	CAP24	CAP32	CAP48	CAP64	CAP80
Injection unit size rating	267	394	586	904	1330	2052
Clamping unit size rating	75	110	150	200	250	350
Injection unit						
Screw diameter (mm)	37	43	49	56	64	74
L/D ratio	22	22	22	22	22	22
Injection volume (cc)	167	254	377	566	853	1312
Shot weight (PS) (g)	149	227	337	506	761	1171
Shot weight (PP) (g)	127	194	289	433	652	1003
Injection pressure (kg/cm ²)	1604	1551	1553	1595	1561	1565
Plasticizing capacity (PP) (kg/h)	65	93	128	187	274	368
Plasticizing capacity (PP) (g/s)	18.1	25.8	35.6	52.1	76.0	102.3
Injection speed (cm/s)	12.4	12.4	11.7	10.9	11.5	10.3
Injection rate (cc/s)	133	180	220	269	369	443
Injection stroke (mm)	155	175	200	230	265	305
Injection time (s)	1.25	1.41	1.72	2.10	2.31	2.96
Screw rotary speed (rpm)	398	353	324	313	303	261
Carriage force (ton)	3.4	3.4	5.5	5.5	8.6	13.5
Carriage stroke (mm)	201	236	261	281	316	412
Clamping unit						
Clamping force (ton)	75	110	150	200	250	350
Opening stroke (mm)	378	432	484	572	638	750
Min. mould height (mm)	180	205	235	270	310	370
Max. mould height (mm)	570/670	595/720	655/780	710/850	775/925	1030/1100
Max. daylight (mm)	948/1048	1027/1152	1139/1264	1282/1422	1413/1563	1780/1850
Clearance btwn tiebars (hXv)(mm mm)	410x410	460x460	520x520	620x620	670x670	820x820
Platen size (hXv)(mm mm)	600x600	680x665	770x770	900x890	980x980	1150x1150
Max. mould length (mm)	740	800	970	1030	1140	1300
Mould opening force (ton)	53	74	101	137	173	240
Mould opening speed (cm/s)	64.9	67.7	67.2	49.5	54.2	56.1
Mould closing speed (cm/s)	153.3	139.6	138.6	110.9	118.6	115.0
Dry cycle time (s)	0.83	0.95	1.07	1.67	1.71	1.99
Ejector forward force (ton)	3.9	5.0	8.0	10.2	15.2	19.6
Ejector backward force (ton)	2.7	3.4	5.5	7.0	10.2	13.5
Ejector stroke (mm)	100	115	135	160	180	250
Ejector forward speed (cm/s)	54.1	56.1	42.4	42.2	37.9	35.3
Ejector backward speed (cm/s)	80	83	62	61	56	51
Ejection time (40mm stroke) (s)	0.12	0.12	0.16	0.16	0.18	0.19
Number of ejector pins	5	5	13	13	13	13
General						
Motor power (kW)	14.9	18.6	22.4	29.8	37.3	44.7
Motor power (hp)	20	25	30	40	50	60
Heating power (kW)	9.88	12.38	14.84	20.81	25.1	33.05
Total current (A)	44.8	54.3	64.2	88.3	107.8	134.4
Temperature zones	4+1	4+1	4+1	4+1	5+1	5+1
Oil tank capacity (l)	300	330	360	500	550	820
Hopper capacity (l)	55	55	58	72	72	86
System pressure (kg/cm ²)	160	160	160	160	160	160
Dimension (lXwXh)(m)	4.55x1.03x1.7	5.33x1.11x1.77	5.85x1.18x1.83	6.5x1.2x1.9	7.4x1.4x1.95	8.3x1.6x2.2
Weight (ton)	4	4.5	7	9.5	12	15
Number of 28 mm cavities (mm)	16	24	32	48	64	80
Theoretical cycle time (s)	4.07	4.38	4.49	5.30	5.10	5.23
Theoretical cycle time, eject-on-the-fly (s)						

Specifications are subject to change without notice.

Model	CAP16 DP	CAP24 DP	CAP32 DP	CAP48 DP	CAP64 DP	CAP80 DP
Injection unit size rating	267	394	586	904	1330	2052
Clamping unit size rating	75	110	150	200	250	350
<i>Injection unit</i>						
Screw diameter (mm)	34/37	39/43	44/49	51/56	58/64	68/74
L/D ratio	23.9/22	24.3/22	24.5/22	24.2/22	24.3/22	23.9/22
Injection volume (cc)	141/167	209/254	304/377	470/566	700/853	1108/1312
Shot weight (PS) (g)	126/149	187/227	271/337	419/506	625/761	989/1171
Shot weight (PP) (g)	108/127	160/194	233/289	359/433	536/652	847/1003
Injection pressure (kg/cm ²)	1900/1604	1886/1551	1927/1553	1923/1595	1900/1561	1853/1565
Plasticizing capacity (PP) (kg/h)	77/101	115/156	156/219	232/310	322/436	460/597
Plasticizing capacity (PP) (g/s)	22/28	32/43	43/61	64/86	89/121	128/166
Injection speed (cm/s)	19.2	21.0	19.8	18.1	18.3	16.7
Injection rate (cc/s)	174/206	250/304	302/374	369/445	483/588	606/718
Injection stroke (mm)	155	175	200	230	265	305
Injection time (s)	0.81	0.84	1.01	1.27	1.45	1.83
Screw rotary speed (rpm)	617	595	553	517	482	422
Carriage force (ton)	4.3	4.3	6.7	6.7	10.1	15.3
Carriage stroke (mm)	201	236	261	281	316	412
<i>Clamping unit</i>						
Clamping force (ton)	75	110	150	200	250	350
Opening stroke (mm)	378	432	484	572	638	750
Min. mould height (mm)	180	205	235	270	310	370
Max. mould height (mm)	570/670	595/720	780	710/850	775/925	1030/1100
Max. daylight (mm)	948/1048	1027/1152	1139/1264	1282/1422	1413/1563	1780/1850
Clearance btwn tiebars (hXv)(mm mm)	410x410	460x460	520x520	620x620	670x670	820x820
Platen size (hXv)(mm mm)	600x600	680x665	770x770	900x890	980x980	1150x1150
Max. mould length (mm)	740	800	970	1030	1140	1300
Mould opening force (ton)	53	74	101	138	172	235
Mould opening speed (cm/s)	64.9	67.7	67.2	49.5	54.2	56.1
Mould closing speed (cm/s)	153.3	139.6	138.6	110.9	118.6	114.9
Dry cycle time (s)	0.83	0.95	1.07	1.67	1.71	1.99
Ejector forward force (ton)	3.9	5.0	8.0	10.2	15.2	19.6
Ejector backward force (ton)	2.7	3.4	5.5	7.0	10.2	13.5
Ejector stroke (mm)	100	115	135	160	180	250
Ejector forward speed (cm/s)	29.8	38.5	29.8	27.5	22.4	21.9
Ejector backward speed (cm/s)	44	57	44	40	33	32
Ejection time (40mm stroke) (s)	0.22	0.17	0.23	0.25	0.30	0.31
Number of ejector pins	5	5	13	13	13	13
<i>General</i>						
Motor power (kW)	22.4	29.8	44.7	55.9	74.6	74.6
Motor power (hp)	30	40	60	75	100	100
Heating power (kW)	9.88	12.38	14.84	20.81	25.1	33.05
Total current (A)	56.7	75.6	106.7	134	174	186.1
Temperature zones	4+1	4+1	4+1	4+1	5+1	5+1
Oil tank capacity (l)	372	531	654	798	1032	1263
Hopper capacity (l)	55	55	55	72	72	86
System pressure (kg/cm ²)	160	160	160	160	160	160
Dimension (LxWxH)(m)	1.7x1.03x1.7	5.33x1.11x1.77	5.85x1.18x1.83	6.5x1.2x1.9	7.4x1.4x1.95	8.8x1.6x2.2
Weight (ton)	4.5	5	7.5	10	13	16
Number of 28 mm cavities (mm)	16	24	32	48	64	80
Theoretical cycle time (s)						
Theoretical cycle time, eject-on-the-fly (s)	3.42	3.58	3.70	4.42	4.38	4.39