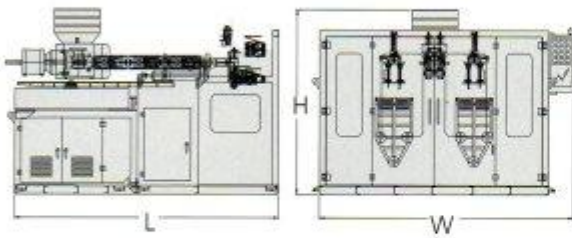




## Machine Dimensions

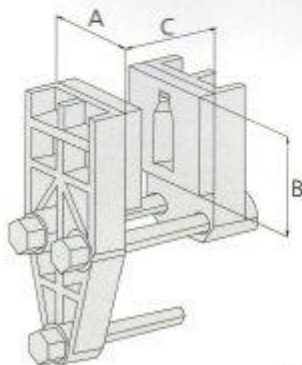
Unit:m/m



MODEL	SIZE	L	W	H
PK45		2800	2200	2400
PK55		2800	2200	2400
PK65		3500	3200	2500
PK75		3800	3500	2800
PK90		4000	3800	3000

## Mold Dimensions

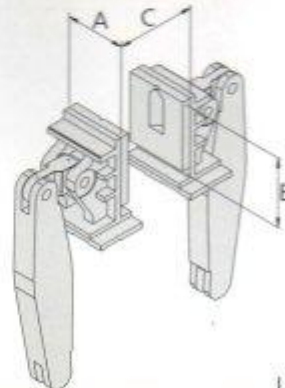
**(3 TIE BARS)**



Unit:m/m

MODEL	SIZE	W	H	Max. Opening	Min. Clamping
		A	B		C
PK45TS/TD		250	290	330	80
PK55TS/TD		250	290	330	80
PK65TS/TD		350	410	410	100
PK75TS/TD		460	450	550	120

**(TOGGLE TYPE)**



Unit:m/m

MODEL (TOGGLE)	SIZE	W	H	Max. Opening	Min. Clamping
		A	B		C
PK90TS					
PK90TD		520	520	550	120
PK90T3					
PK90T4					

MODEL	SIZE	W	H	Max. Opening	Min. Clamping
		A	B		C
PK45T3		350	410	330	80
PK55T3/T4		350	410	330	80
PK65T3		350	410	410	100
PK65T4		460	450	410	100
PK75T3/T4		460	450	550	120



# Specifications

MODEL	UNIT	PK45TS	PK55TS	PK65TS	PK75TS	PK90TS	PK45TD	PK55TD	PK65TD	PK75TD	PK90TD
Material To Be Used		PE/PP PVC	PE/PP PVC	PE/PP PVC	PE/PP	PE/PP (TOGGLE)	PE/PP	PE/PP	PE/PP	PE/PP	PE/PP (TOGGLE)
<b>PRODUCT</b>											
Product Volume (Min/Max)	cc	100-500	250-1000	500-2500	1000-5000	4000-10000	10-300	100-500	300-1000	500-2000	1000-3000
Product Dia. (Min/Max)	mm	20-85	20-100	30-140	50-200	70-260	10-80	20-80	30-100	50-120	40-160
Product Max. Weight	g	60 60	100 80	170 130	280	450	40	80	120	140	160
<b>EXTRUDER</b>											
Screw Diameter	mm	45	55	65	75	90	45	55	65	75	90
L/D		26:1 22:1	26:1 22:1	26:1 20:1	26:1	26:1	26:1	26:1	26:1	26:1	26:1
Screw-speed Range (PE/PP)	RPM	15-85	20-80	20-80	20-75	20-65	15-85	20-80	20-80	20-75	20-65
Screw-speed Range (PVC)	RPM	20-50	20-50	20-50	x	x	x	x	x	x	x
Induction Motor+Inverter(PE/PVC)	HP	15 20	20 25	25 30	40	60	15	20	25	40	60
Max. Extruding Output/ Per Hour	kgs	36 48	48 60	60 72	96	144	36	48	60	96	144
Barrel Heating Zone	zone	2	3	3	3	4	2	3	3	3	4
Barrel Heating Capacity	kw	5	7.6 5.4	10.8 8	15	21.6	5	7.6	10.8	15	21.6
<b>DIE HEAD</b>											
Twin Cavity Center Distance	mm	x	x	x	x	x	100	100	120	140	180
Heating Zone	zone	2	3	3	3	4	3	3	3	5	5
Heating Capacity	kw	4.8 3.5	5.8 5.1	7.2 6.5	10.4	18.5	6.7	6.9	9.7	11	23
<b>MOLD PLATEN</b>											
Clamping Force	Ton	5.5	5.5	8	13	13	5.5	5.5	8	13	13
Max. Opening Stroke	mm	330	330	410	550	550	330	330	410	550	550
Min. Clamping Stroke	mm	80	80	100	120	120	80	80	100	120	120
Platen Size (WxH)	mm	250 x 290	250 x 290	350 x 410	460 x 450	520 x 520	250 x 290	250 x 290	350 x 410	460 x 450	520 x 520
Carriage Stroke	mm	280	280	450	520	580	280	280	450	520	580
<b>HYDRAULIC SYSTEM</b>											
Pump Motor	HP	15	15	25	30	30	15	15	25	30	30
Pump Pressure	kg/cm <sup>2</sup>	160	160	180	180	180	160	160	180	180	180
Air Pressure	kg/cm <sup>2</sup>	5-7	5-7	5-7	5-7	5-7	5-7	5-7	5-7	5-7	5-7
Air Volume	NL/Min	500	500	600	750	1500	500	500	600	900	1500
Oil Tank Capacity	gallon	100	100	100	100	100	100	100	100	100	100
Total Power Consumption	kw	32.2 34.6	39.5 40.3	55.3 55.5	77.6	107.2	34.8	42	59.8	81	115.3
Average Power Consumption	kw	22.5 24.2	27.7 28.2	38.7 38.9	54.3	75	24.3	29.4	41.8	56.7	80.71
Machine Weight	Ton	4	6	6.5	7.5	10	4.5	6.5	7	8	10.5
Packing Size (L x W x H)	inch	154"x89"x89" 40"x89"x89"	154"x89"x89" 40"x89"x89"	165"x89"x102" 40"x89"x89"	138"x89"x102" 122"x89"x102"	276"x89"x102" 157"x89"x102" 40"x89"x102"	154"x89"x89" 40"x89"x89"	154"x89"x89" 40"x89"x89"	165"x89"x102" 40"x89"x89"	138"x89"x102" 122"x89"x102"	276"x89"x102" 157"x89"x102" 40"x89"x102"
Machine Meas't	M <sup>3</sup>	25	25	30	38	60	25	25	30	38	60

MODEL	UNIT	PK45T3	PK55T3	PK65T3	PK75T3	PK90T3	PK55T4	PK65T4	PK75T4	PK90T4
Material To Be Used		PE/PP	PE/PP	PE/PP	PE/PP	PE/PP (TOGGLE)	PE/PP	PE/PP	PE/PP	PE/PP (TOGGLE)
<b>PRODUCT</b>										
Product Volume (Min/Max)	cc	5-100	10-300	20-500	50-1000	100-1500	5-150	10-300	50-500	100-1000
Product Dia. (Min/Max)	mm	10-65	15-65	20-80	25-80	30-100	10-65	10-65	20-80	30-100
Product Max. Weight	g	8	15	40	60	70	12	30	50	60
<b>EXTRUDER</b>										
Screw Diameter	mm	45	55	65	75	90	55	65	75	90
L/D		26:1	26:1	26:1	26:1	26:1	26:1	26:1	26:1	26:1
Screw-speed Range (PE/PP)	RPM	20-75	20-75	20-75	20-70	20-65	20-75	20-75	20-70	20-65
Screw-speed Range (PVC)	RPM	x	x	x	x	x	x	x	x	x
Induction Motor+Inverter(PE/PVC)	HP	15	20	25	40	60	20	25	40	60
Max. Extruding Output/ Per Hour	kgs	36	48	60	96	144	48	60	96	144
Barrel Heating Zone	zone	2	3	3	3	4	3	3	3	4
Barrel Heating Capacity	kw	5	7.6	10.8	15	21.6	7.6	10.8	15	21.6
<b>DIE HEAD</b>										
Twin Cavity Center Distance	mm	85	85	100	100	120	85	85	100	120
Heating Zone	zone	4	4	4	4	6	8	8	8	8
Heating Capacity	kw	6.2	7.8	10.4	12.2	16.8	13.3	14.3	15	22
<b>MOLD PLATEN</b>										
Clamping Force	Ton	5.5	5.5	8	13	13	5.5	13	13	13
Max. Opening Stroke	mm	330	330	410	550	550	330	410	550	550
Min. Clamping Stroke	mm	80	80	100	120	120	80	100	120	120
Platen Size (WxH)	mm	350 x 410	350 x 410	350 x 410	460 x 450	520 x 520	350 x 410	460 x 450	460 x 450	520 x 520
Carriage Stroke	mm	450	450	450	520	580	450	520	520	580
<b>HYDRAULIC SYSTEM</b>										
Pump Motor	HP	15	15	25	30	30	15	25	30	30
Pump Pressure	kg/cm <sup>2</sup>	160	160	180	180	180	160	180	180	180
Air Pressure	kg/cm <sup>2</sup>	5-7	5-7	5-7	5-7	5-7	5-7	5-7	5-7	5-7
Air Volume	NL/Min	500	500	600	750	1500	500	750	900	1500
Oil Tank Capacity	gallon	100	100	100	100	100	100	100	100	100
Total Power Consumption	kw	33.6	41.5	58.5	79.4	105.5	47	62.4	86.5	110.7
Average Power Consumption	kw	23.5	29.1	41.0	55.6	73.9	32.9	43.7	60.6	77.5
Machine Weight	Ton	5	7	7.5	8.5	11	7.5	8	9	11.5
Packing Size (L x W x H)	inch	154"x89"x89" 40"x89"x89"	154"x89"x89" 40"x89"x89"	165"x89"x102" 40"x89"x89"	138"x89"x102" 122"x89"x102"	276"x89"x102" 157"x89"x102" 40"x89"x102"	154"x89"x89" 40"x89"x89"	165"x89"x102" 40"x89"x89"	138"x89"x102" 122"x89"x102"	276"x89"x102" 157"x89"x102" 40"x89"x102"
Machine Meas't	M <sup>3</sup>	25	25	30	38	60	25	30	38	60