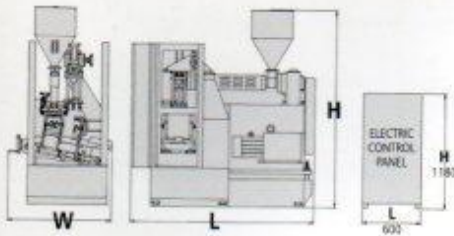


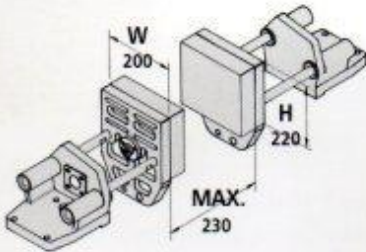
## Machine Dimensions



Unit:m/m

MODEL	SIZE		
	L	W	H
PK42HS	1890	1060	2100
PK42HD	1890	1060	2100

## Mold Dimensions



Unit:m/m

MODEL	SIZE		Max. Opening	Min. Clamping
	H	W		
PK42HS	220	200	230	85
PK42HD	220	200	230	85

## Auxiliary Equipment

- AUTO LOADER
- HOPPER DRYER
- CHILLER
- COOLING TOWER
- AIR COMPRESSOR
- CONVEYOR
- GRANULATOR
- MIXER
- LEAK TESTER
- LABELLING M/C
- MOLD

## Specifications

MODEL	UNIT	PK42HS		PK42HD
Material To Be Used		PE/PP	PVC	PE/PP
<b>PRODUCT</b>				
Product Volume (Min/Max)	cc	20-200		20-100
Product Dia. (Min/Max)	mm	15-100		10-60
Product Max. Weight	g	60		30
<b>EXTRUDER</b>				
Screw Diameter	mm	42		42
L/D		1:22		1:22
Screw-speed Range (PE/PP)	RPM	15-85		15-85
Screw-speed Range (PVC)	RPM	10-60		X
Extruding VS Motor	HP	7.5	10	7.5
Max. Extruding Output/ Per Hour	kgs	15	20	15
Barrel Heating Zone	zone	2		2
Barrel Heating Capacity	kw	3		3
<b>DIE HEAD</b>				
Twin Cavity Center Distance	mm	X		100
Heating Zone	zone	3		3
Heating Capacity	kw	2.8	2.6	4.6
<b>MOLD PLATEN</b>				
Max. Opening Stroke	mm	230		230
Min. Clamping Stroke	mm	85		85
<b>HYDRAULIC SYSTEM</b>				
Pump Motor		5HP x 6P		5HP x 6P
Pump Pressure	kg/cm <sup>2</sup>	120		120
Oil Tank Capacity	gallon	30		30
Total Power Consumption	kw	15.2	15	16.8
Average Power Consumption	kw	10.6	10.5	11.7
Machine Weight	Ton	1.5		1.5
Packing Size (L x W x H)	inch	79"x89"x69"		79"x89"x69"
Machine Meas't	M <sup>3</sup>	8		8

\* All specifications and designs are subject to change without notice.