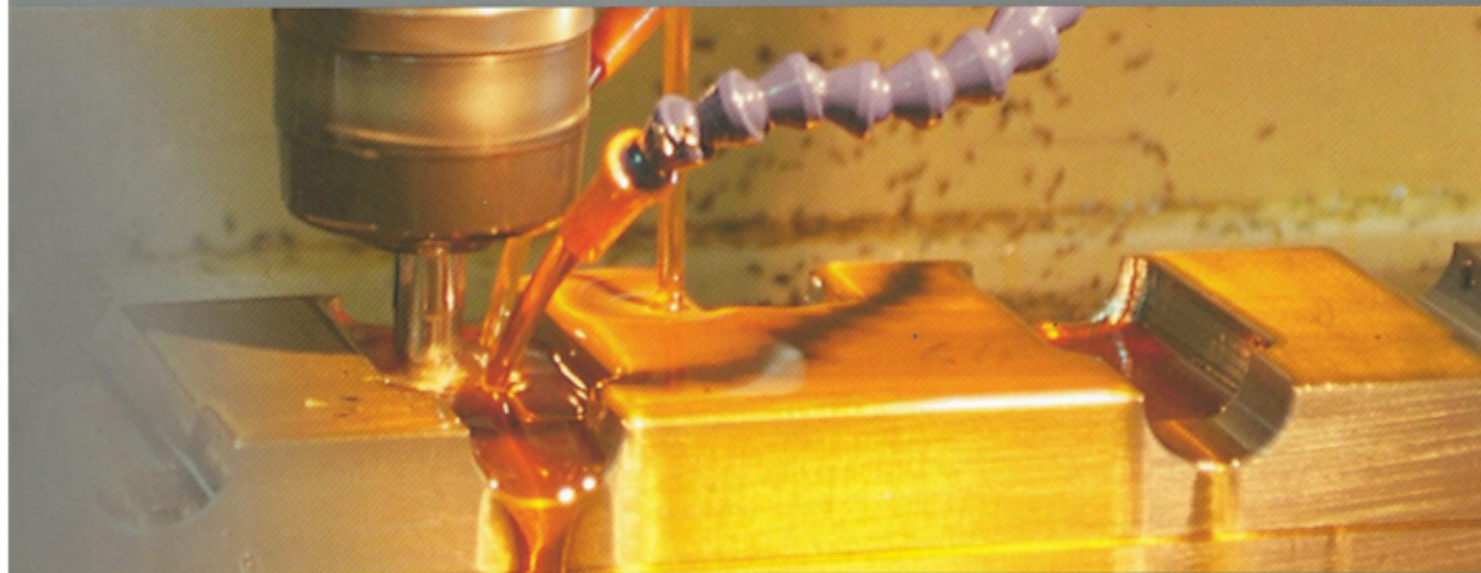




GOLFANG MFG & DEVELOPMENT CO.,LTD.

PLASTIC INJECTION BLOW MOLDING MACHINE

GOLFANG



GOLFANG

GOLFANG

GOLFANG



Professionalism

Responsibility

Innovations

Research and Development

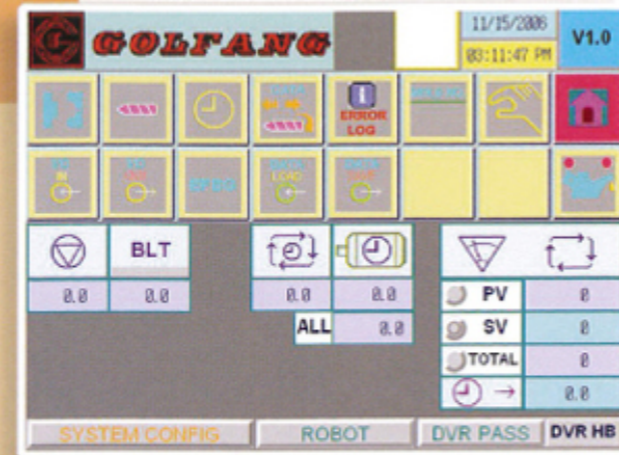
Golfang Mfg. & Development Co., Ltd. guarantees its customers successful product development and product sales from the time an order is accepted because the company believes an excellent production equipment can produce good quality products and give no troubles to the customer.

■ **Product Order and Manufacturing Procedures**



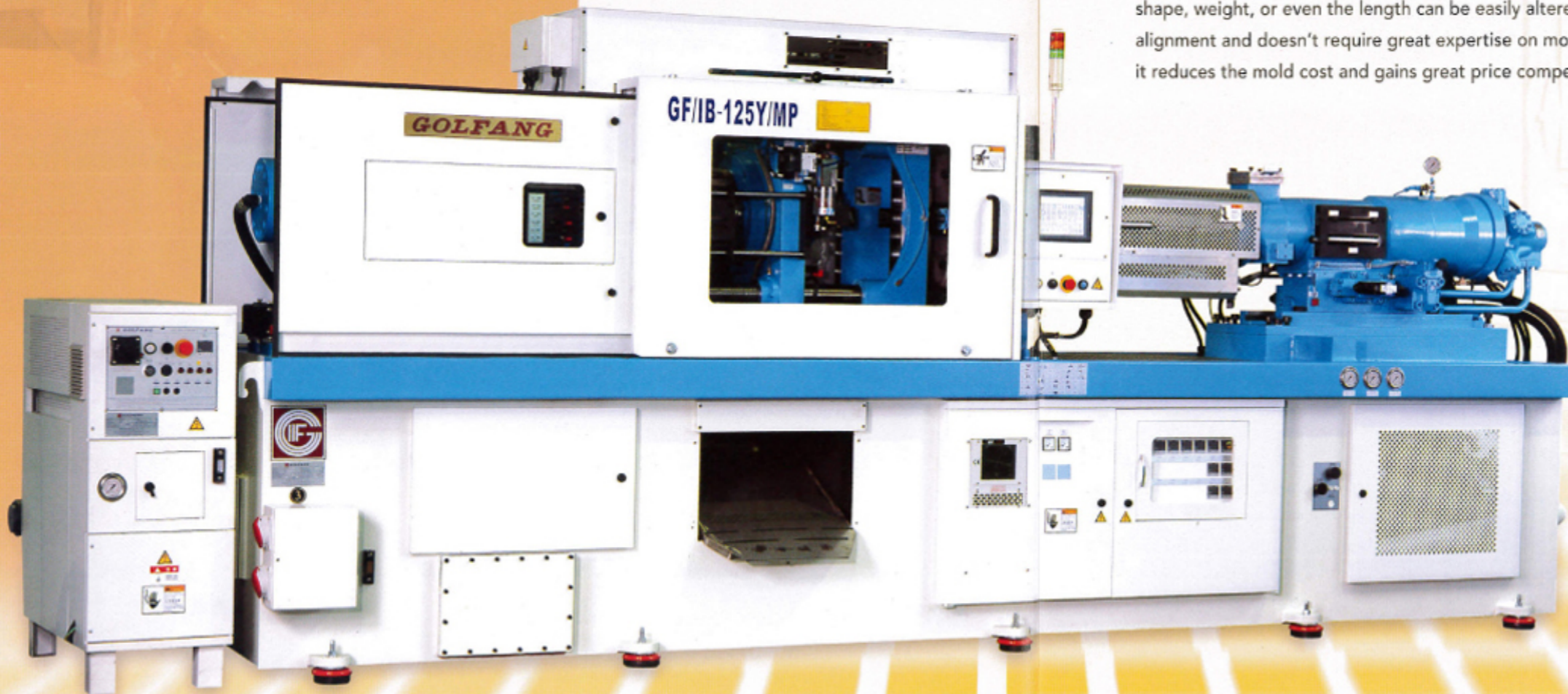
Specialized Products

- ▶ Injection Blow Molding Machine (GF/IB-Series)
- ▶ Single-Stage Injection Stretch Blow Molding Machine (GF/ISB-Series)
- ▶ Moulds for GF/IB-Series & GF/ISB-Series
- ▶ High Temperature & Pressure Heat Transfer System(GF/TO-Series)



Main Features of GF/IB Series Machinery

1. The mechanical design of GF/IB series is based upon general-purpose injection molding machine. Anyone with general knowledge about injection molding machine can competently operate and maintain the machine.
2. The mold design adopts the method of common mold base. Only by changing the mold parts, the product's shape, weight, or even the length can be easily altered according to the market demand. It saves time on mold alignment and doesn't require great expertise on mold changeover. For high-variety, low-volume product orders, it reduces the mold cost and gains great price competitive advantage.
3. The control system uses HMI-PLC (Human Machine Interface/Programmable Logic Controller) as the center control unit for the specialized machine. It has the capability to store multiple sets of parameters. When one machine is utilized to manufacture different products, the parameter storage unit can provide specific set of manufacturing parameters to the selected product. The simplified interface provides convenience to the operator for data setting, displays malfunction information, provides friendly detailed human machine screen, and gives the solution to machine malfunction. Therefore, it reduces the dependence on skillful technician and increases the product's stability.
4. Ideal for a variety of product development, including baby bottles, beverage bottles, cosmetic bottles, medicine bottles, water bottles, lampshades, etc. Suitable for various resins, including PC, PS, PP, PE, PET, PETG, AS, PMMA K-Resin, and PES.



Product Characteristic



- • • Multiple cavities, high production capacity, high benefit return for investor

The equipment is suitable for HIPS beverage bottle's high-volume demand, can be integrated into automatic packing line, supplies 8,500 bottles per hour to accommodate automatic empty bottle unscrambler, and has the most beneficial return in the beverage market.

- • • Smooth inner and outer bottleneck, precise thread, good sealing

The bottle thread mold is manufactured with precision machine tools. Through injection molding process, the thread has precise size and matches perfectly with corresponding cap to provide perfect sealing. Customers can simply purchase low-price common injection-molded caps to meet their quality control requirements.



- • • Products with good quality, uniform wall thickness, consistent bottle weight

With strict demands in manufacturing the machine and precision mold, the output plastic products have consistent size and perfect appearance, and meet the cosmetic and medical containers' high-precision, high-quality requirements.

- • • No need for secondary process on the products, no scraps, save money

All output bottles are complete products and don't need to go through trimming process, which lowers the manufacturing cost and increases the competitive capability. It can be directly integrated into automatic production line and would absolutely comply with GMP requirements.



● STANDARD SERIES

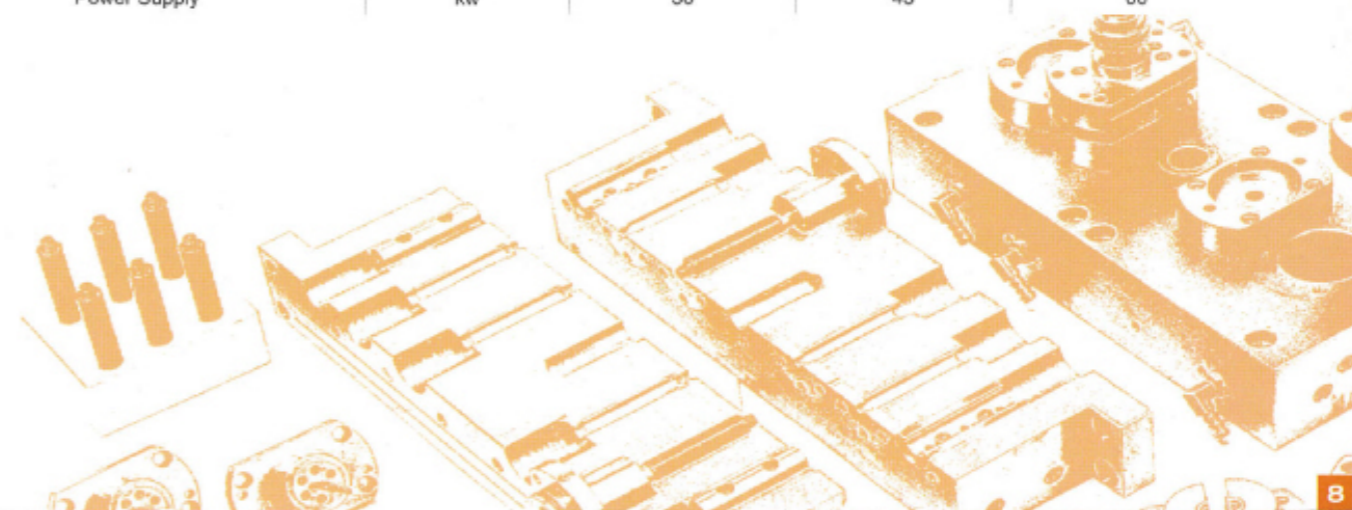
MODEL NO.	UNIT	GF/IB-60	GF/IB-90	GF/IB-125
INJECTION - INLINE SCREW				
Screw Dia.	mm	32	35	40
Inj. Capacity	cm ³	80	100	125
Inj. Pressure	kg/cm ²	1800	1435	1155
Inj. Rate	cm ³ /sec	75	100	100
Screw Revolving Speed	R.P.M.	25-250	25 - 200	20 - 190
Nozzel Sealing Force	tons	2.7	4	4.3
Heater	kw	6	8.5	16
CLAMPING-PRESSURE BOOSTER RAM SYSTEM				
Clamping Force	tons	60	90	125
Die Open Force	tons	3.4	5.2	7.5
Space Between Tie Bars	H.V.(mm)	305 x 305	370 x 335	460 x 460
Platen Dimension	H-V (mm)	475 x 475	570 x 545	680 x 680
Clamping Stroke	mm	400	450	450
CORE UNIT				
Number of Stations		2	2	2
Moving Stroke	mm	370	395	395
BLOW UNIT				
Clamping Force	tons	2.5	2.5	3.5
Open-Close Stroke	mm	50 x 2	50 x 2	70 x 2
HYDRAULIC				
Work Pressure	kg/cm ²	140	140	140
Pump Output	l/min	72 +11.3	100 + 11.3	126 + 18.7
Pump Drive Motor	HP	20HP x 6P	30HP x 6P	40HP x 6P
Oil Tank Cap.	l	350	450	700
Comp. Air	kg/cm ²	8 ~ 15	8 ~ 15	8 ~ 15
MACHINE DIMENSION				
Overall Dimension	Meter	4.4 x 1.1 x 2.7	5 x 1.2 x 2.7	5.8 x 1.4 x 2.75
Weight of Machine	tons	5	6	8
Packing Measurement	cube feet	500	620	860
POWER REQUIREMENT				
Cooling Water (UNDER 25oC)	Kcal/hr	10,000	15,000	19,000
Chilled Water (UNDER 10oC)	Kcal/hr	7,000	10,000	15,000
Air Compressor	l/min	250	300	500
Power Supply	kw	30	45	60

● STANDARD AND OPTIONAL ACCESSORIES

ACCESSORIES	○ STANDARD	△ OPTION
Emergency Stop Device		○
Clamping Safety Device		○
Pneumatic Ejector		○
Oil-less Bearing		○
Shutoff Nozzle		△
Hydraulic Oil Overheating Alarm		○
Vacuum Generator		○
Air Compressor		△
Hopper		○
Auto Loader		△
Heat Transfer Medium I. C. System		△
DC Control Circuit		○
Proportional Electro-Hydraulic Control		○
Special Screw		△
Multi-Pump		△
Transducer		△
PLC Temperature Control Unit		△

● EXTRA-LONG SERIES

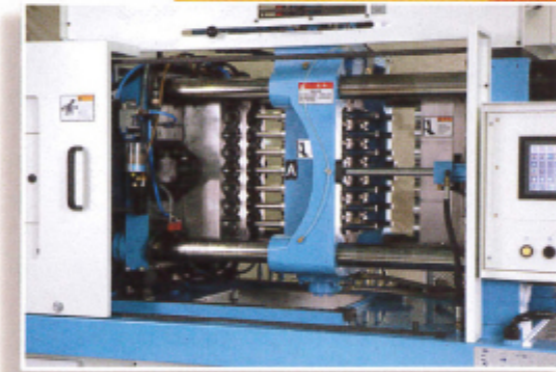
MODEL NO.	UNIT	GF/IB-60L	GF/IB-90L	GF/IB-125L
INJECTION - INLINE SCREW				
Screw Dia.	mm	32	35	40
Inj. Capacity	cm ³	80	100	125
Inj. Pressure	kg/cm ²	1800	1435	1155
Inj. Rate	cm ³ /sec	75	100	120
Screw Revolving Speed	R.P.M.	25 - 250	25 - 200	20 - 190
Nozzel Sealing Force	tons	2.7	4	4.3
Heater	kw	6	8.5	16
CLAMPING-PRESSURE BOOSTER RAM SYSTEM				
Clamping Force	tons	60	90	125
Die Open Force	tons	3.4	5.2	7.5
Space Between Tie Bars	H.V.(mm)	305 x 305	370 x 335	460 x 460
Platen Dimension	H-V (mm)	475 x 475	570 x 545	680 x 680
Clamping Stroke	mm	490	540	560
CORE UNIT				
Number of Stations		2	2	2
Moving Stroke	mm	415	500	480
BLOW UNIT				
Clamping Force	tons	2.5	2.5	3.5
Open-Close Stroke	mm	50 x 2	50 x 2	120 x 2
HYDRAULIC				
Work Pressure	kg/cm ²	140	140	140
Pump Output	l/min	72 +11.3	100 + 11.3	126 + 18.7
Pump Drive Motor	HP	20HPx 6P	30HPx 6P	40HPx 6P
Oil Tank Cap.	l	380	540	820
Comp. Air	kg/cm ²	8 ~ 15	8 ~ 15	8 ~ 15
MACHINE DIMENSION				
Overall Dimension	Meter	4.7 x 1.1 x 2.7	5.3 x 1.2 x 2.7	6.2 x 1.4 x 2.75
Weight of Machine	tons	5.5	6.5	8.5
Packing Measurement	cube feet	540	660	920
POWER REQUIREMENT				
Cooling Water (UNDER 25oC)	Kcal/hr	10,000	15,000	19,000
Chilled Water (UNDER 10oC)	Kcal/hr	7,000	10,000	15,000
Air Compressor	l/min	250	300	500
Power Supply	kw	30	45	60



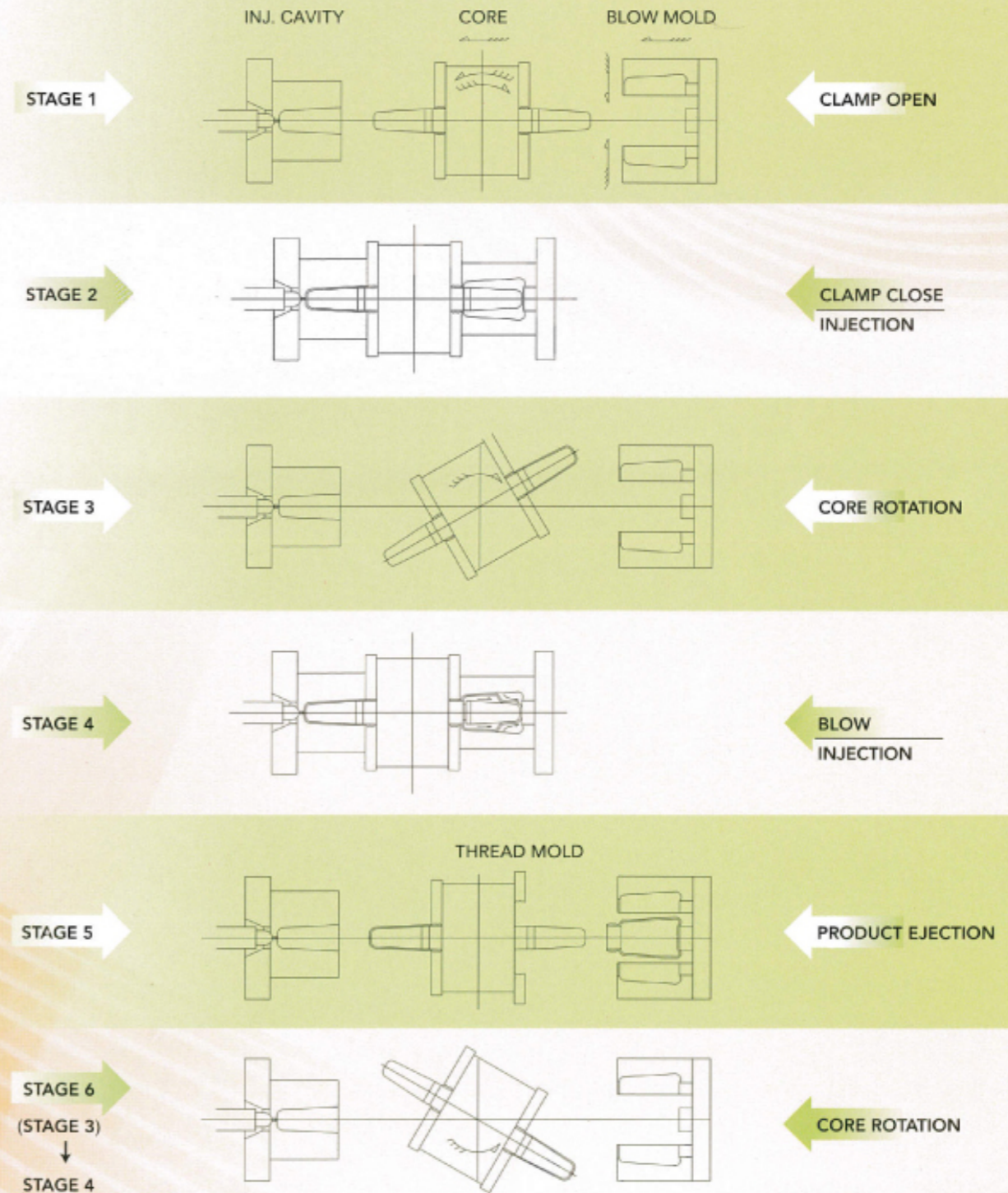
● SIZE & PRODUCTION QUANTITY LIST FOR MOLD CAVITY OF GF/IB-SERIES

Model No.	d2 Thread out Dia. /mm	D (Max.) /mm	H (Max.) /mm	Max. Cap./cc.	W.G./Gram	Cycle Timer / Sec.	Production / hour / Bottle
IB-60-S1	80	100	150	950	75	20 - 30	120 - 180
IB-60-S2	56	75	110	280	37	16 - 28	250 - 450
IB-60-S3	46	65	100	100	25	12 - 24	450 - 900
IB-60-S4	38	50	100	80	18	10 - 20	720 - 1400
IB-60-S5	30	32	100	50	15	10 - 18	1000 - 1800
IB-60-S6	25	30	100	35	12	10 - 16	1200 - 2160
IB-60L-S1	80	100	190	950	75	20 - 30	120 - 180
IB-60L-S2	56	55	180	280	37	16 - 28	250 - 450
IB-60L-S3	46	40	180	100	25	12 - 24	450 - 900
IB-60L-S4	38	35	140	80	18	10 - 20	720 - 1400
IB-60L-S5	30	32	120	50	15	10 - 18	1000 - 1800
IB-60L-S6	25	30	110	35	12	10 - 16	1200 - 2160
IB-90-S1	95	120	180	1600	120	22 - 40	90 - 160
IB-90-S2	68	85	160	500	60	20 - 30	240 - 360
IB-90-S3	55	75	150	360	40	16 - 28	380 - 670
IB-90-S4	50	60	150	260	30	12 - 24	600 - 1200
IB-90-S5	43	45	150	120	25	10 - 20	900 - 1800
IB-90-S6	38	40	150	100	20	9 - 20	1100 - 2400
IB-90L-S1	95	120	220	1600	120	22 - 40	90 - 160
IB-90L-S2	68	85	200	500	60	20 - 30	240 - 360
IB-90L-S3	55	60	190	360	40	16 - 28	380 - 670
IB-90L-S4	50	55	175	260	30	12 - 24	600 - 1200
IB-90L-S5	43	45	160	120	25	10 - 20	900 - 1800
IB-90L-S6	38	40	160	100	20	9 - 20	1100 - 2400
IB-125-S1	115	180	180	3000	250	25 - 65	55 - 140
IB-125-S2	80	130	150	1200	125	22 - 40	180 - 320
IB-125-S3	65	130	150	700	80	20 - 30	360 - 540
IB-125-S4	57	100	150	600	60	18 - 28	500 - 800
IB-125-S5	52	85	150	400	50	17 - 27	670 - 1000
IB-125-S6	47	70	150	320	40	16 - 24	900 - 1350
IB-125-D8	40	85	140	200	30	12 - 18	1600 - 2400
IB-125-D10	36	70	140	200	25	12 - 18	2000 - 3000
IB-125-D12	33	60	140	150	20	12 - 18	2400 - 3200
IB-125L-S1	115	180	250	3000	250	25 - 65	55 - 140
IB-125L-S2	80	130	230	1200	125	22 - 40	180 - 320
IB-125L-S3	65	130	230	700	80	20 - 30	360 - 540
IB-125L-S4	57	100	230	600	60	18 - 28	500 - 800
IB-125L-S5	52	85	230	400	50	17 - 27	670 - 1000
IB-125L-S6	47	70	200	250	40	16 - 24	900 - 1350
IB-125L-D8	40	85	200	250	30	12 - 18	1600 - 2400
IB-125L-D10	36	70	200	250	25	12 - 18	2000 - 3000
IB-125L-D12	33	60	200	200	20	12 - 18	2400 - 3200
IB-125Y/MP-D12	32 HIPS	60	120	200	20	7 - 9	4800 - 6100
IB-125Y/MP-D14	30 HIPS	55	120	150	17	7 - 9	5600 - 7200
IB-125Y/MP-D16	28 HIPS	49	90	80	15	7 - 9	6400 - 8200
IB-230-S1	160	400	450	16" Globe	800	25 - 110	30 - 144

※ This list uses the molding shrinkage rate and specific gravity of Polystyrene (PS) as standard.
This list is for reference only and may change according to the container design and specifications.
We welcome your inquiry at any time.



● GF/IB-SERIES PRODUCTION FLOWCHART



51, Tai-yi Rd., Jente Hsiang, Tainan, Taiwan.
TEL: 886-6-2795551 FAX: 886-6-2795553
E-mail: golfang@ms39.hinet.net URL: www.golfang.com

